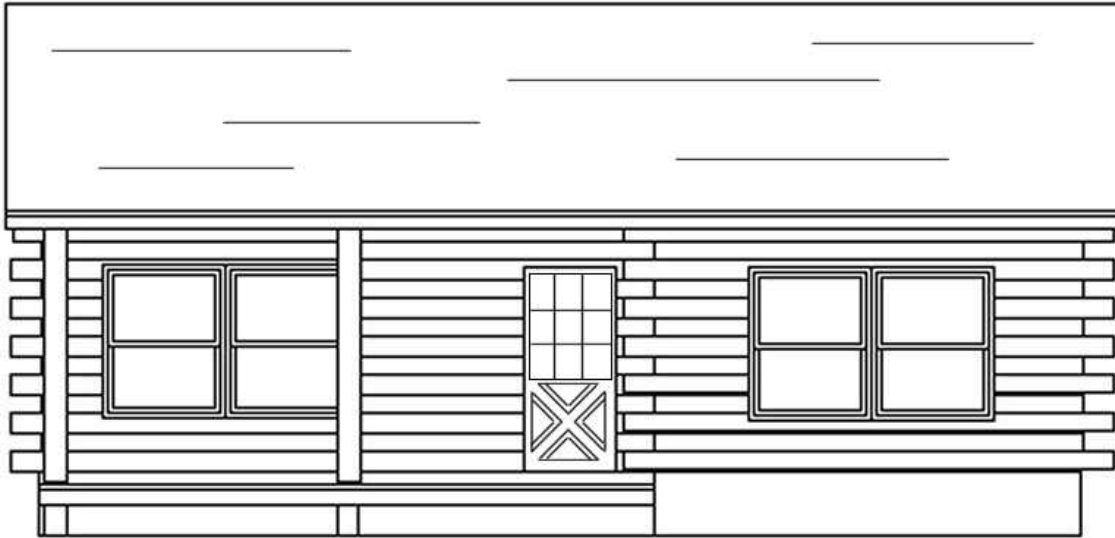


# The Greenbriar



[www.locktitelogs.com](http://www.locktitelogs.com)

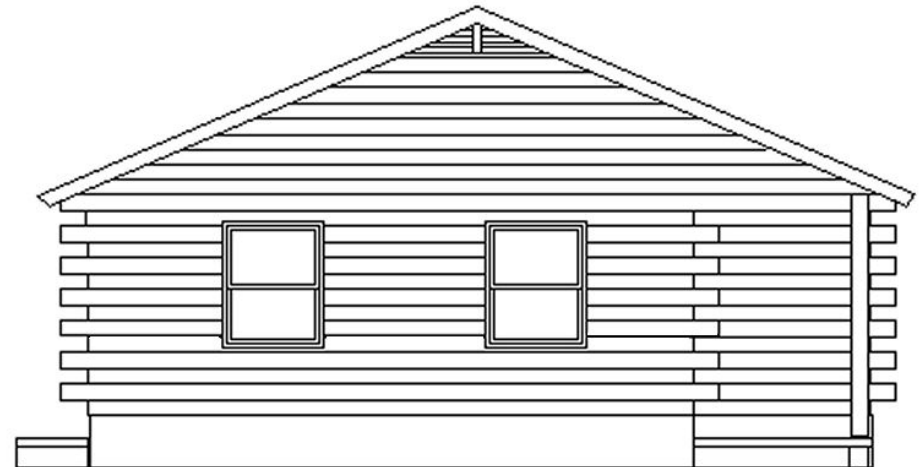
## Square Footage

First Floor: *960 Sq Ft.*

Porches: *120 Sq Ft.*

Total Footage: *1020 Sq Ft.*

Total Living Space: *960 Sq Ft.*



All floor plan measurements are approximations and are subject to change. Up-to-date, and accurate layouts are supplied in the blueprints for all of our models.

# The Greenbriar

Plan # LT04015

## Logs Only Package

Lock-Tite Laminated Logs  
PVC Foam Seal  
3/8" x 8" Lag Bolts  
Sika-Flex 201 Adhesive Caulk

## Structure Package

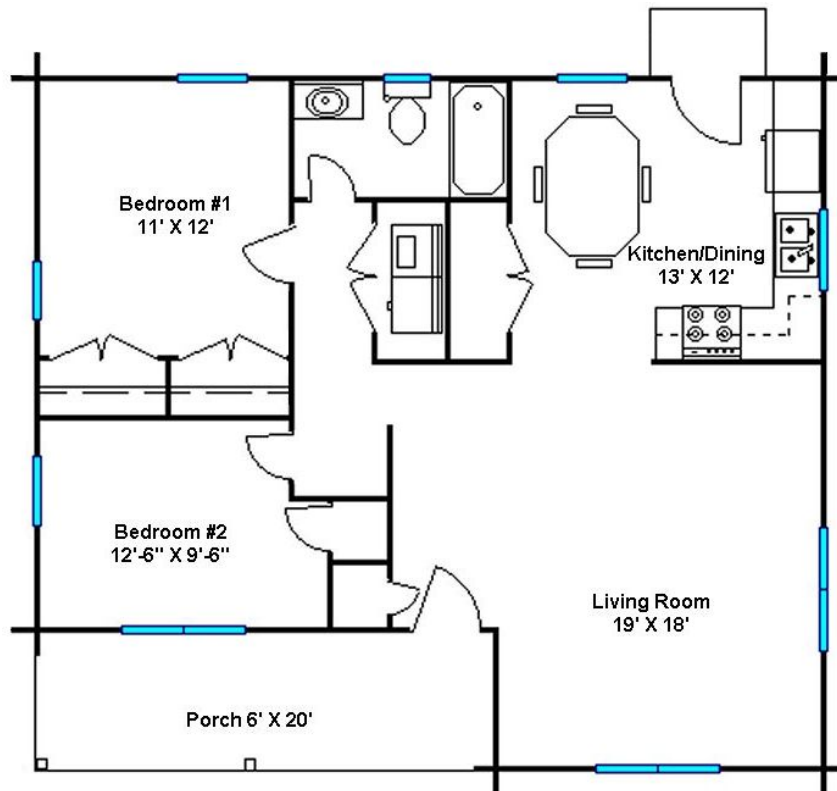
Laminated Joists & Beams (2<sup>nd</sup> Floor)  
Laminated Roof Rafters & Ridge Beams  
Laminated Porch Posts & Rafters

## Dry-In Package

Sub-Floor Package	Porch Package
2 <sup>nd</sup> Floor Package (If required)	Deck Package
Full Roof Structure Package	Stairway Package
All Wood Window & Door Package	Framing Package
Exterior Trim Package	

## Optional Services

Pre-Cut Corner Systems  
Pre-Drilled For Bolts  
Pre-Cut Starter Plates  
Pre-Cut Window & Door Bucks  
Start-Up On Site Assistance Program



470 B. Leazer Road Salisbury, North Carolina 28147

Phone: (704) 638-0722

Fax: (704) 633-9217

Email: [Contact@locktitelogs.com](mailto:Contact@locktitelogs.com)

WWW: [www.locktitelogs.com](http://www.locktitelogs.com)